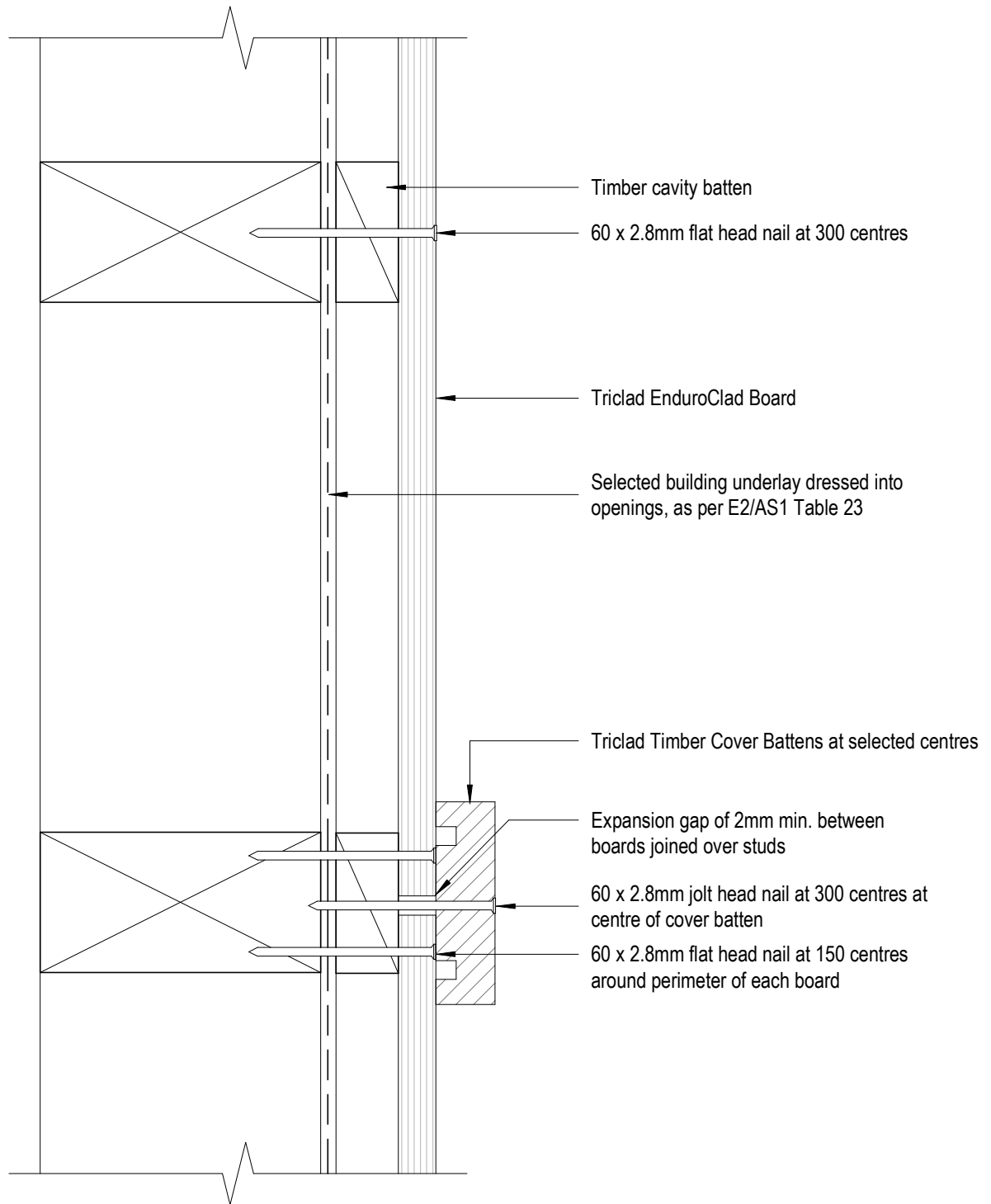


# Triclad EnduroClad



Timber cavity batten

60 x 2.8mm flat head nail at 300 centres

Triclad EnduroClad Board

Selected building underlay dressed into openings, as per E2/AS1 Table 23

Triclad Timber Cover Battens at selected centres

Expansion gap of 2mm min. between boards joined over studs

60 x 2.8mm jolt head nail at 300 centres at centre of cover batten

60 x 2.8mm flat head nail at 150 centres around perimeter of each board



**TRICLAD**  
CLADDING SYSTEMS

8 Quail Place  
Hamilton Lake  
Hamilton  
New Zealand

## Cavity Fix Nailing Setout Detail

T. 0800 874 2523

E. sales@triclad.co.nz

www.triclad.co.nz

1 : 2 @ A4  
Scale

Dec 2019  
Date

Fig 1  
Dwg