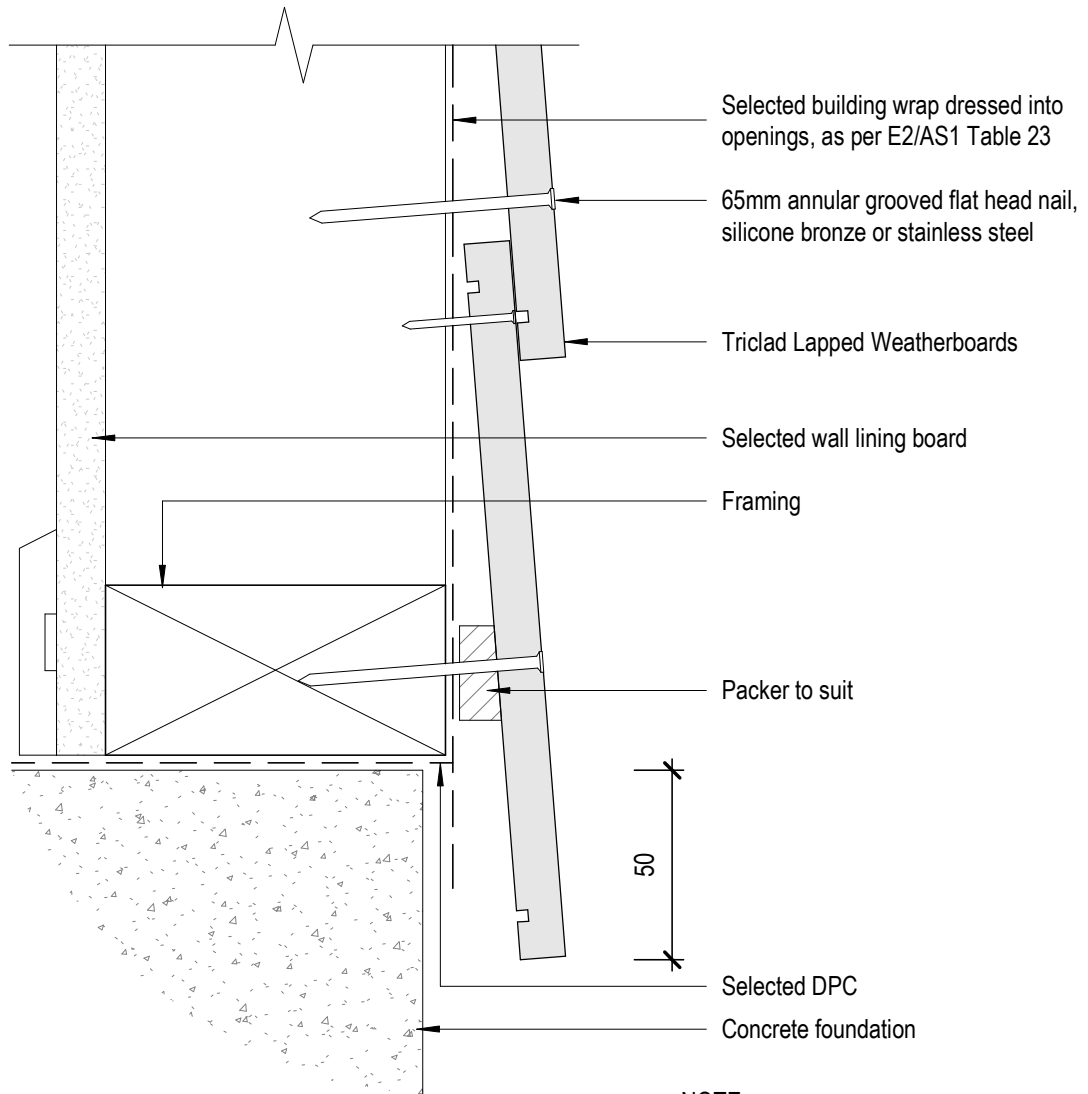


# Triclad Weatherboard



**NOTE:**  
Ground clearances to bottom  
of cladding as per NZS3604:2011



**TRICLAD**  
CLADDING SYSTEMS

8 Quail Place  
Hamilton Lake  
Hamilton  
New Zealand

**Direct Fix**  
**Base Detail-Concrete Floor**

T. 0800 874 2523

E. sales@triclad.co.nz

www.triclad.co.nz

1 : 2 @ A4  
Scale

Sept 2019  
Date

Fig 22  
Dwg